



REDMOND PRESBYTERIAN CHURCH

- Seeking to be Faithful Followers of Jesus Christ in the 21st Century -

June 2011

To the Least of These

Rev. Dr. Larry Grounds

"You are the salt of the earth . . . You are the light of the world." Matthew 5:13-14

"Truly I tell you, just as you have done it to one of the least of these who are my brothers and sisters, you have done it to me." Matthew 25:40

Every morning when I read the Seattle Times I'm confronted by selfishness and greed of individuals, groups, and nations. Occasionally when I see a story of someone who displays courage or sacrifice, great generosity or forgiveness, I feel a slight surge of hope. It's like a light in the darkness. As followers of Jesus Christ in the 21st century, we are called to be light and to fight societal decay like salt. That's what our community of faith is called to be—light and salt. In contrast to a cultural norm where so many people fight to get for themselves, we are called to spend our energy and resources on showing compassion to people. Most of these people we don't even know. This is a distinct mark of being followers of Jesus Christ. In the parable of the sheep and the goats, Jesus identifies himself directly with the needy and rejected of the world.

Last Sunday morning I felt gratitude when our worshipping congregation prayed over Glen Strachan as he travels to Tanzania in order to dig water wells and help orphans in the name of Christ. I felt gratitude when Del Taylor asked for contributions to the annual *End Summer Hunger* campaign during the morning announcements. I felt gratitude on Sunday

afternoon just seeing a large group of our church members (including children) marching in the rain for *Crop Walk*, an ecumenical effort to end hunger in the world. These most recent acts of compassion and mission in the name of Christ simply echo what our church must hold up as an indispensable dimension of being disciples.

When I see a story of someone who displays courage or sacrifice . . . it's like a light in the darkness.

As our church moves toward its 50th anniversary (June 2015), I would like our efforts to be more widespread and intentional in the mission of Christ to bring healing and compassion to our world. I want us, individually and corporately, to deepen our identity as a people of faith who share our lives and resources to serve others in the name of Christ.

Here are some ways this mission focus might order our lives.

- ◆ Let us as parents (and grandparents) model for our children acts of service for others. Work in a soup kitchen or help with Tent City or give a Saturday to working on a house for Habitat for Humanity. Actions

(Continued on page 4)

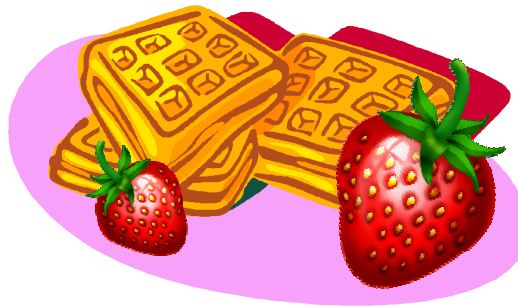
Highlights

- VBS Week begins June 26th with an all-church picnic after worship (pg 2)
- Youth group goes on yearly mission trip to Yakima June 19th
- Seekers is having their yearly book selection meeting. Help them pick their next book list.
- PC(USA) ratified an amendment to change ordination requirements (pg 5)
- Karen Cunningham, Choir Director, retires June 12th
- Sign up to help serve dinner at Tent City Jun 27
- Children's Church needs summer teachers. Sign up today!

Strawberry Waffle Feed

Sunday June 5th after both Worship Services

Join us in the Upper Room for our annual Youth Group sponsored Strawberry Waffle Feed! Donations will be accepted to help fund youth missions. Our mission trip this year will be June 19th - 24th to Yakima, WA.

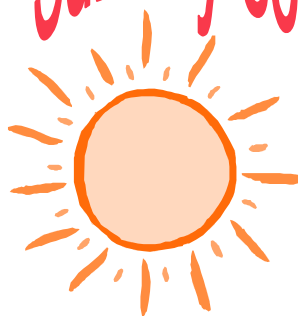


Inside This Issue

Children's Ministry	2
Spiritual Formation	3
Youth Ministry	4
Mission PC(USA) Update	5
Fellowship Beyond These Walls	6
Calendar	7



Sign up to teach summer
Sunday school @ 10am!



upcoming events..

Vacation Bible School is just around the corner! We are very excited to be exploring Jesus' hometown of Nazareth to see what life was like when Jesus was a kid.

Monday June 27—Thursday June 30 we will gather from 9:30AM—noon to worship the Lord and learn all about God's message for us! Please visit our website for a registration form or check in the sanctuary on Sunday mornings.

If you have questions please contact Jessica Ahnert at jessica.ahnert@redmondpres.org. (VBS is for students who will be in Preschool-5th grade this coming Fall. Nursery is available for volunteers working at VBS)

Current Mission Focus:



- June 5** •Puppets in both services & Puppet Recognition
- Strawberry Waffle Feed following each service (Youth Fundraiser)

- June 12** •Last Sunday of 2-service schedule
- Volunteer Recognition

- June 19** •One Service @ 10:00AM
- New Unit on The Lord's Prayer

- June 26** •All-Church & VBS Picnic!!!

- June 27-30** •Vacation Bible School 9:30AM-noon

- July 3** •Family Communion Sunday (Nursery Available, no Sunday School)



Adult Spiritual Formation

Weekly Opportunities for Adult Education

Small Group at the Wickert's—Sundays 6:30PM
Ephesians (*Jane or Dave 425-898-9721*)

Tuesdays 6:30AM Men's Bible Study—Tully's Bella Bottega
Gospel of John with Pastor Larry (*425-885-2811*)

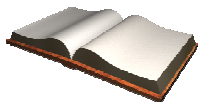
Tuesdays 10:30AM Bible Study—Prayer Library
Gospel of John with Pastor Larry (*425-885-2811*)

Wednesday Night Women's Bible Study—CE Build. 7:30PM
Jesus' Parables About Priorities (*Pat Prophet 425-861-6746*)

Thursdays 9:15 AM Bible Study at Emerald Heights
Gospel of John with Pastor Larry (*see below*)

Seekers

Women's Book Discussion Group



Have you read a good book lately? Suggest it to a member of the women's book club or call Michele in the office. Our yearly selection meeting is in June. We read Christian, secular, fiction and non-fiction books.

Date: Monday, June 13th
Prayer and Support: 7:00 - 7:45PM
Book Selection: 7:45 - 9:00PM
Host: Barbara Taylor
Phone: 425-885-6059

July Selection: *My Name Is Mary Sutter* by Robin Oliveira. In this stunning historical novel, Mary Sutter is a brilliant, headstrong midwife from Albany, New York, who dreams of becoming a surgeon. Determined to overcome the prejudices against women in medicine—and eager to run away from her recent heartbreak—Mary leaves home and travels to Washington, D.C. to help tend the legions of Civil War wounded. Under the guidance of William Stipp and James Blevens—two surgeons who fall unwittingly in love with Mary's courage, will, and stubbornness in the face of suffering—and resisting her mother's pleas to return home to help with the birth of her twin sister's baby, Mary pursues her medical career in the desperately overwhelmed hospitals of the capital.

Women's Wednesday Night Bible Study

Our Wednesday evening Bible study invites the women of the church to join us on Wednesday evenings at 7:30PM. We meet in Room 14 in the CE Building. Our new study is entitled "Jesus' Parables About Priorities". Please join us for this summer study. For further information, call Pat Prophet 425-861-6746.

CHANGES COMING FOR FALL 2011

There will be a number of exciting options for spiritual growth in the fall. Look for Bible studies, sessions on the geography and history of the Holy Land, as well as other engaging opportunities. Wednesday Night Live (with Word on Wednesday and ASCENT) will return in October.

Traditional Worship: 9:00AM-10:00AM

Fellowship and Education Hour

10:00AM-11:05AM All-church fellowship time following worship in the CE Building.

10:15AM-11:05AM Adult Education with one or more offerings weekly, with occasional guest speakers. Classes will not meet when all-church fellowship events are scheduled during this time.

Contemporary Worship: 11:15AM-12:15AM

10-Week Study on John's Gospel with Pastor Larry at Emerald Heights

Ten one-hour lectures (with questions and discussion) continue at Emerald Heights at the Thursday Bible study 9:45AM on June 2, 23, 30, July 7, 14, 21, and 28. We welcome RPC members and friends to join many of our in-residence Emerald Heights church members for this engaging study. Classes are designed to help us understand the Gospel's historical context, theological meaning, and its author's purpose in writing the book. We also seek to apply our understanding of the text to our everyday lives in the 21st century. All are welcome to come—beginners or bible study veterans, residents or visitors to Emerald Heights (10901—176th Circle NE, Redmond).

The Adult Spiritual Formation Commission meets on the first Tuesday of every month in the Conference Room (off the Sanctuary) at 7:00PM. We are in the process of seeking new members and invite you to consider using your considerable gifts in planning for opportunities for spiritual growth. We are already beginning to plan for next fall, and we need your input! Please contact Katie Schmidt at 425-968-8753 if you need more information.

Youth Events in June**Junior High**

Ascent—Wed 7-8:30PM, will not meet 6/22
Jr. High Sunday School resumes in Sept

Senior High

The Hall—Sun 7—8:45PM, will not meet 6/19
Sr. High Mission Trip to Yakama Indian
Reservation 6/19-6/24

All Youth BBQ - June 29th 7PM

Coming in July: Creation Music Festival in
Enumclaw 7/20-7/23

Hello RPC! We are just a few weeks into the interim period and everything is going great thanks to all the volunteers and your support! We are currently doing a talk series on discipleship called "Follow Me." Each week we look at a lesson that Jesus gave to His followers and discuss how we can apply it to the way we live our own lives, striving to follow Christ. The youth that attend our Wednesday and Sunday evening programs are awesome, and they make our job as leaders a true blessing. Please keep RPC's youth program in your prayers, and thank you all for your encouragement!

Grace and peace, Daniel

Strawberry Waffle Feed Fundraiser

Our annual Strawberry Waffle Feed fundraiser is Sunday, June 5th between services. Youth need to be at the church at 9:00AM to set things up. Contact Lori Dorn at dorns5@comcast.net if you have any questions. See you then!

Progressive Dinner: Senior High Youth—Watch for more info on a formal-themed progressive dinner in June. More details to come at Youth Group and on Facebook.

Creation West 2011 Music Festival

The event this summer is July 20 – 23 at the Enumclaw Expo Center in Enumclaw, Washington. Get your \$50 deposit in today to Interim Youth Director Daniel Griffin to reserve a spot! Tickets will be around \$110, and in previous years the total cost for tickets, camping, and food was under \$200. For more information, pick up a Creation flyer at Jr. or Sr. High Youth Group on Sunday or Wednesday nights, or contact Ron Dorn, Mary Kay Weinmeister or Daniel Griffin. The lineup for Creation is at www.creationfest.com/nw.



Come experience Toby Mac, Switchfoot, Skillet, Newsboys, Thousand Foot Krutch, David Crowder Band, KJ-52, Hawk Nelson, all the bands on the Fringe Stage, plus many more!!

To the Least of These, continued

(Continued from page 1)

speak louder than words. In our church, may we always provide biblical education in Jesus' call to service for others and offer hands-on opportunities for our children and youth to practice selfless acts of compassion. Whether this giving comes in the form of buying chicks for Third World *have nots* through the Heifer Project, or filling shoe boxes for poor children of the world, or going on mission trips to an Indian reservation in eastern Washington, or simply making a meal for the homeless shelter program, may the youngest among us be taught to see that love for others and selfless acts of generosity is an integral part of what it means to be a Christian.

- ◆ Let us hold high those who make sacrifices for public service and encourage our children to use their gifts and acquired skills to make a difference in the world. This would mean that we would not promote making lots of money and accumulating wealth over a life and career goals involving sacrifice for others.

- ◆ Let us make financial contributions to charities which bring transformation to society in the name of Christ. Consider the monetary allocations your family makes each year towards our world of need. Our checkbook gives evidence of where our passion and priorities actually lie. On a congregational level, I would like our church leadership to make a commitment to give, at least, 10% of our accumulated yearly pledges and gifts to ministries and missions beyond our local church.
- ◆ Let us pray daily for the many people in local and far off places who suffer from want, from war, or from oppression. May we never look at the world with dry eyes.

When we care *for the least of these*, we care for our Lord.



Mission News

Requests for Mary's Place and Hopelink:

Mary's Place: Umbrellas, ponchos, dental adhesive, flat irons, hair spray, hair accessories, wigs, exercise mats, bus tickets (.75 and \$2.25), good shoes, cough drops, heating pads, ice packs, flip flops and flashlights.

Hopelink: End Summer Hunger Campaign

CROP Walk Update

Thanks to everyone who came out to walk with us and all who donated to CROP Walk 2011. We had 18 walkers this year, walking 3.1 miles in the rain to raise \$775 and awareness for those who go hungry or who must walk over 3 miles just to get their daily water. Every step we took was a step toward ending hunger in our community and the world.



Bring Back Your Filled Grocery Bags and Cash Donation Envelopes!



Tent City Dinner

Help us feed our neighbors at Tent City. We will be serving dinner on Monday June 27 at Tent City currently housed at St. Jude's Church down the street. We will have a sign up sheet at church for food preparations and serving needs or contact Juliann Phillips, juliannph@gmail.com if you would like to be a part of our team.

Most Recent Changes to Ordination in the Presbyterian Church



Just recently, Amendment 10-A to the PC(USA) constitution was passed by a majority of our Presbyterian Church (USA) presbyteries. This provision eliminates the church's prohibition against the ordination of sexually active gays and lesbians as church officers. It replaces G-6.0106b, which required "fidelity within the covenant of marriage between a man and a woman or chastity in singleness." With this new provision the language calls for candidates for ordination "to submit joyfully to the Lordship of Jesus Christ in all aspects of life" and affirms the responsibility of ordaining bodies to examine each candidate's fitness for office individually. This change in our denomination's constitution allows local congregations and each Presbytery to determine the qualities they deem most important in determining a person's fit for ministry. Congregations and presbyteries are to prayerfully discern the gifts and call of each candidate for ordination, guided by Scripture and the confessions.

Last year our Session studied the ordination of homosexuals. The elders spent much time in conversations, prayers, and struggles over differences within our community, and they presented open forums to help our congregation process various Christian viewpoints on the subject. The Session finally issued a statement which affirmed our openness to *Welcoming All People in the Spirit of Christ* to our community of faith. (See church Webpage) The Session also stated that it would determine a person's fitness for their calling to serve in ordained ministry on a case-by-case basis. Our Session's position taken at that time is now, essentially, the same position our denomination has embraced with this most recent change in the constitution.

Please feel free to talk to me about this if you have questions. ~ Pastor Larry

Fellowship News

Weekenders

Fellowship for Empty Nesters & Retirees

Miniature Golf at Willows Run Golf Course

You are invited to a friendly game of Putt Putt golf. Meet at Heron Lake Pro Shop in the Willows Run golf complex. Lunch will follow at Firecreek Grill on the golf course.

When: Saturday, June 25, 10:00AM

Where: Rainbow Run
at Willows Golf Course
10402 Willows Rd. NE

Miniature Golf Cost: \$8.00

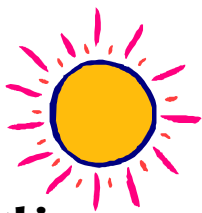
Host: Bob & Betty Koenig 425-867-0202

RETIREMENT CELEBRATION FOR KAREN CUNNINGHAM

Please join us at our fellowship time between services **Sunday, June 12th** as we honor Karen Cunningham for her many years as Choir Director at Redmond Presbyterian Church. To contribute to a gift, drop off your contribution to Michele in the office or mail it to Michele at RPC, 10020 166th Avenue NE, Redmond 98052 by Sunday, June 5th.



**Summer Schedule
Starts June 19th**



10:00 AM Worship

We return to two services on Sept 11th
at 9:00 & 11:15AM

June Birthdays

June 1 - Mary Alice Hall

June 3 - Bethany Clowers

June 3 - Ted O'Connell

June 3 - Joyce Swope

June 8 - Marjorie Gates

June 11 - Stefan deVilliers

June 12 - Ernie Walter

June 14 - Scott Coats

June 15 - Bertie Glass

June 16 - Jennifer Willson

June 16 - Kate Galambos

June 17 - Al Heineman

June 18 - Margaret Pryne

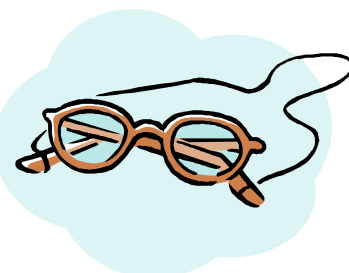
June 21 - Cindy Pearson

June 24 - Tom Galambos

June 30 - Bruce Johnson

Knit One-Pray Too

is a fellowship and mission activity group meeting monthly to knit items for a variety of organizations. Do you have some leftover sock yarn? We are beginning a project to make knitted eye-glass chains for the women



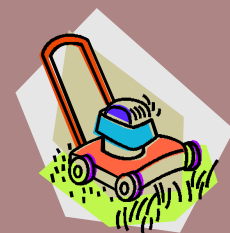
at Mary's Place, a great project for those small balls of leftover yarn. Join us on the first Saturday of each month at 10:00AM (June 4th this month) for knitting or knit at home and bring your items to church. Contact Juliann Phillips at juliannph@gmail.com for more details.

JOIN THE LAWN MOWING TEAM NOW!

RPC is forming a lawn mowing team to keep our grounds looking nice this spring and summer. Please contact Dan Birmingham d.birmingham@hotmail.com or 425-867-1473 if you are willing to be part of this important team!

ADOPT-A-GARDEN

There are still many openings to "adopt a garden" on our campus. Please see the signup map located on the Conference Room window.



Beyond These Walls

In the world today there is so much anger, hatred and violence, but there is still some good and humanity in the Seattle area, and all it takes is a bus ride to see it.

In the evening when Polo and I get off work, we take a bus from the Rainier Valley to Montlake to Redmond. The bus drivers are supposed to tell us the bus numbers, but often they do not. About the time when you think people do not care in this world, other riders waiting for their bus will let us know which bus is coming. Then they ask questions about guide dogs, and show that they care. This scenario

renews your faith that there are kind and loving people still in the Seattle area.

May you tear down the walls, obstacles and barriers and reach out and touch people, family members and church members. Polo and I run into lots of obstacles and obstruction each day . . . things you may not think about, but we overcome them. With a good attitude, love and inner-peace in our hearts, we overcome.

Until next time . . . Jeffrey and Polo

Jeffrey Kuebler

June 2011





**REDMOND
PRESBYTERIAN
CHURCH**

10020 166th Avenue NE
Redmond WA 98052
425-885-2811
office@redmondpres.org
www.redmondpres.org



This newsletter is published 11 months a year (September–July) by Redmond Presbyterian Church. Newsletter articles due the 3rd Tuesday of the month. Please send them to newsletter@redmondpres.org or drop them by the church office.

Newsletter Staff:

Mary Hilke, Michele Bahr and Pat Prophet

RPC Staff

Rev. Dr. Larry Grounds, Pastor
pastor@redmondpres.org
larrygrounds@msn.com

Jessica Ahnert, Children's Ministry Director
jessica.ahnert@redmondpres.org

Daniel Griffin, Interim Youth Director
griffd1@spu.edu

Michele Bahr, Administrative Assistant
office@redmondpres.org

Karen Cunningham, Choir Director
kl.cunningham938@gmail.com

Mike Smith, Organist

Bill Phillips, Praise Team Director
bill.phillips@redmondpres.org

Gylah Davis, Infant & Toddler Caregiver
Jesus Medina, Custodian

Mark Your Calendars

- June 5th - Strawberry Waffle Feed
- June 19th - Begin Summer Worship Schedule - 10:00AM service
- June 26th - All-Church Picnic ~ Kick-off to VBS 11:30AM

Sunday Worship Schedule thru June 12th

- 9:15AM Traditional Worship & Children's Church
- 10:15AM Community Fellowship
- 11:00AM Contemporary Worship & Children's Church

Summer Worship begins June 19th

- 10:00AM Worship & Children's Church

